



INDUSTRY LEADING

RESOLUTION,
ACCURACY,
AND SPEED

SUPERIOR INSPECTION

POWERED BY MACHINE VISION

The Architect machine vision solution detects, measures, and classifies defects and non-conformities in architectural products, including ceiling tiles and flooring.

INDUSTRY LEADING RESOLUTION, ACCURACY AND SPEED

In architectural product manufacturing, superior quality is increasingly critical as the sophistication and expense of finishes continues to evolve. Defects or production issues can be extremely costly, in materials, time loss, and in a manufacturer's reputation. Architect is uniquely capable of inspecting all of the diverse and complex attributes that define luxury vinyl flooring product codes.

Equipped with Boulder Imaging's Architect surface inspection technology, architectural product manufacturers are poised to achieve 100 percent quality inspection of surface and color variances. Defects are located, classified and mapped as the manufacturing line runs at speeds up in excess of 400 linear feet-per-minute. Results are available real-time and can be processed either in-production or at final inspection.

ARCHITECT IS CAPABLE OF INSPECTING

- Lengths of 48+ inches
- Widths of 24+ inches
- Thicknesses of 2-8 millimeters
- Complete color spectrum
- At speeds in excess of 400 linear feet/min
- Embossed, textured, wood grained and smooth surfaces



MULTIPLE IMAGING VIEWS

- **Surface**
- **Color**
L*a*b*, Shade, Metrology, Corner
- **Monochromatic**
Subtle topographical defects
- **Monochromatic**
Gloss coating defects



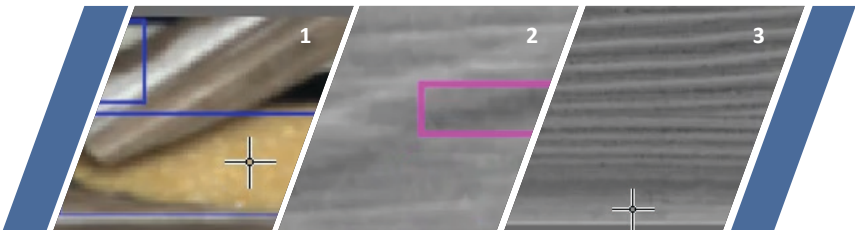
DEFECT DETECTION

In 200 milliseconds Architect

- Inspects for correct size and squareness
- Finds, counts, and classifies all features
- Detects defects and assigns severity
- Processes actions such as stack lights, alarms, markings, and reject gates

DETECTABLE DEFECTS

- Width Out of Tolerance
- Length Out of Tolerance
- Wrinkle²
- Missing Layers³
- White Line
- Divot
- Foreign Color
- Corner Chips
- Edge Profile Damage¹
- Bevel Underspray
- Bevel Overspray
- Blister

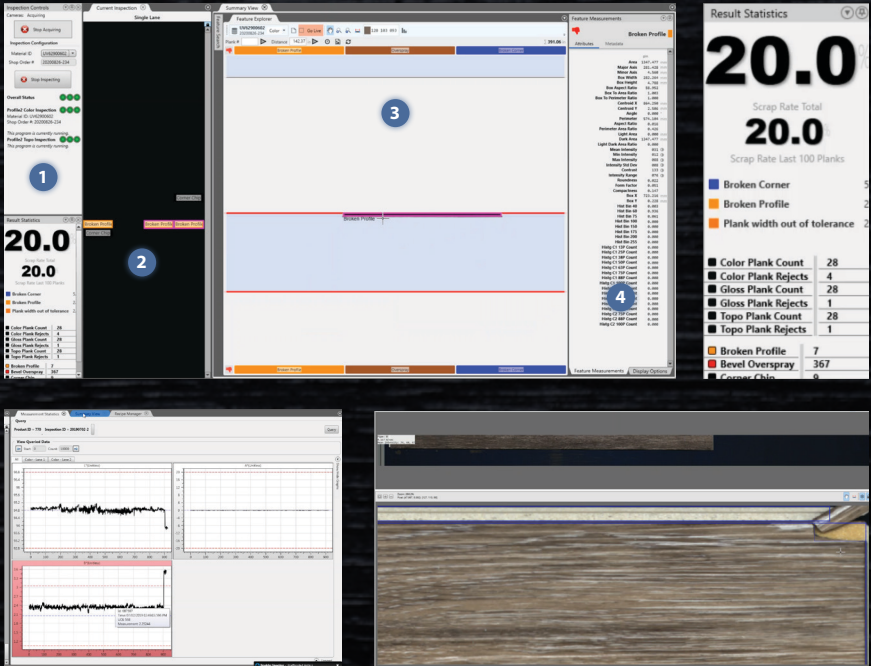




POWERFUL, ACCURATE, ROBUST VISION INSPECTOR

At the core of all Boulder Imaging solutions is Vision Inspector, a software platform that powers our products to make intelligent decisions, continually improve, and adapt using artificial intelligence and convolutional neural networks. Users can “train” the inspection system as specialized needs evolve, avoiding costly development updates each time inspection criteria change. With each inspection, our systems deliver detailed reports and high definition video records for forensics, comparison and archiving. We use visual intelligence to guide real-time process feedback. This feedback leads to minimized manufacturing waste and maximized customer satisfaction by vastly improving quality and greatly reducing claims.





FEATURES OF USER INTERFACE

- Inspection Controls¹
- Current Inspection²
- Summary View³
- Feature Measurements⁴
- Result Statistics (top right)
- Graphical Representation (bottom left)
- Inspection Diagnostics (bottom right)

BOULDER IMAGING

TRANSFORMING PERFORMANCE THROUGH MACHINE VISION

By leveraging machine vision technologies perfected for the defense, aerospace and industrial products industries, Boulder Imaging offers a growing suite of integrated systems and software that “Inspect the Unexpected™”. From the manufacturing lines of flooring and ceiling tile producers to the precision printing of banknotes or rugged wind farm environment, our inspection technology provides revealing visual data for our clients.

SUPERIOR CUSTOMER SERVICE & PROJECT DELIVERY

While we are proud of our technology, we are also passionate about our customer care. Boulder Imaging supports you as a trusted partner throughout the life of your business. Our staff is composed of some of the industry’s most experienced software, optical, and mechanical engineers. Further complemented by highly qualified, versatile and experienced project managers, trainers and field application engineers, our staff acts as an extension of your team to help you every step of the way.



WWW.BOULDERIMAGING.COM

e-mail us: sales@boulderimaging.com
1500 Cherry Street | Suite C
Louisville, CO | 80027